



# My exploration notebook

The essential tool for a family visit



L U M A  
A R L E S

# This exploration notebook belongs to:

---

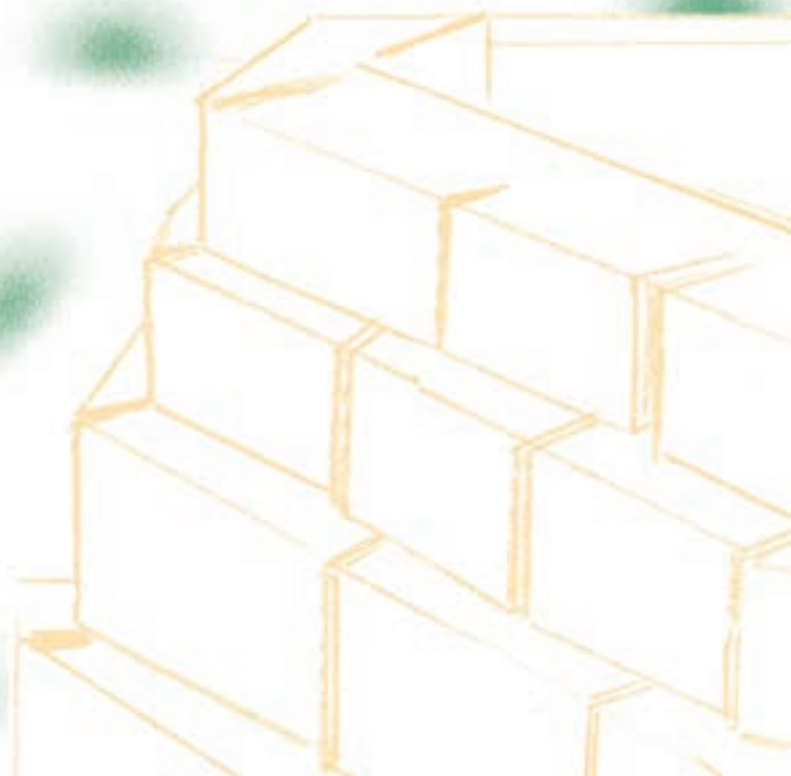
---



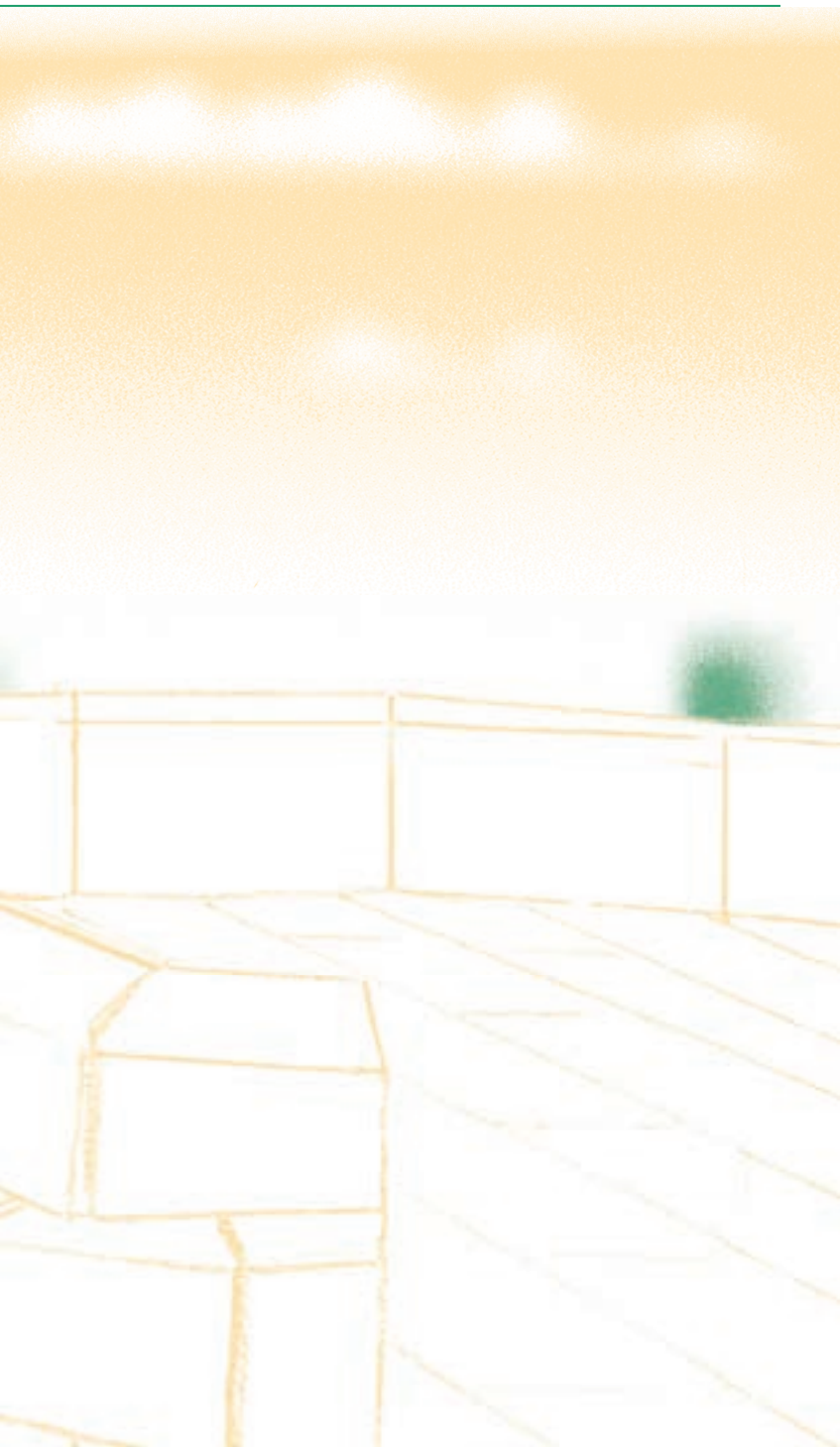


**Imagine your landscape!**

---



\*\*\* In The Tower on Level 9

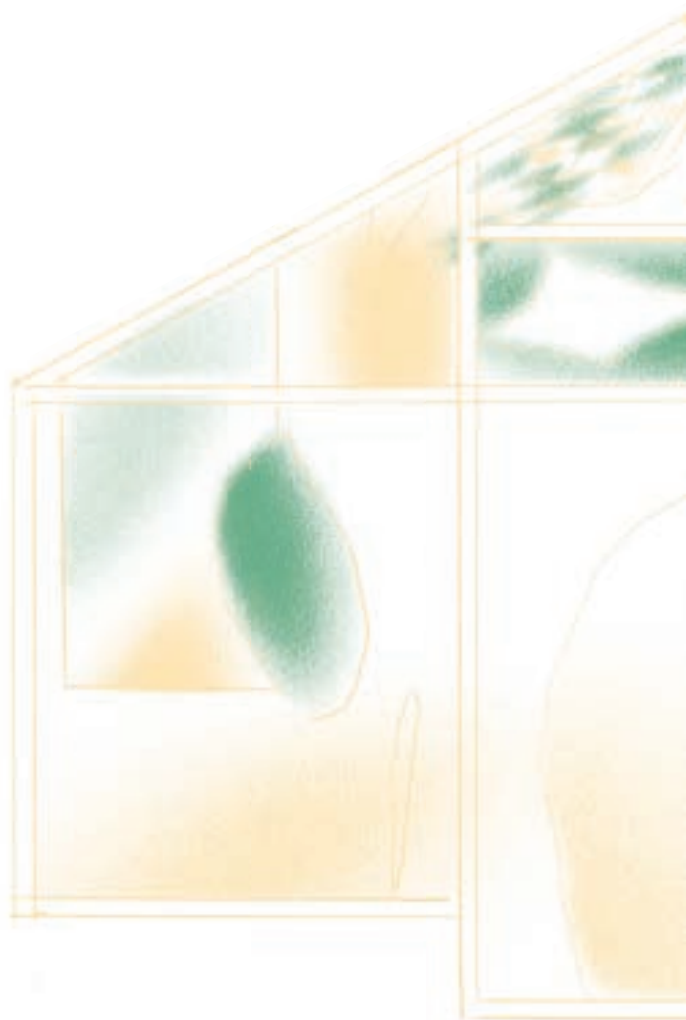


# Some buzzing in The Tower

---

In *The Tower*, artist Helen Marten has created a colorful stained-glass window that plays with daylight.

**Once in the staircase, take a closer look at the artwork to find the hidden insects. Now you can imagine your own insects on this drawing!**

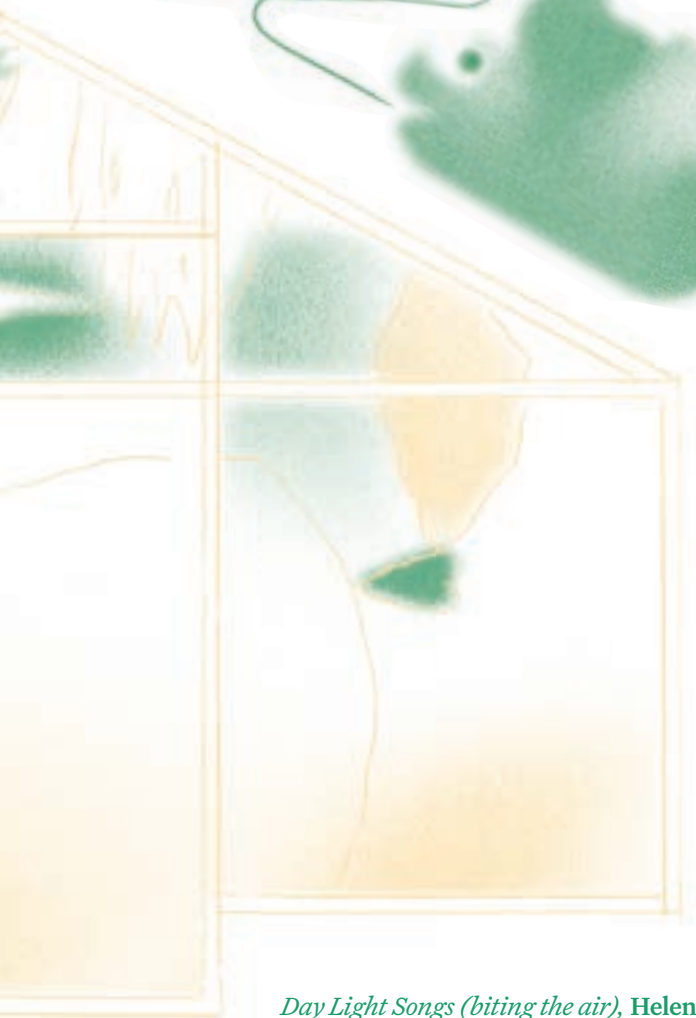




On the stairs of The Tower,  
Levels 9 and 7

---


An artwork is like a  
window through which  
you can see the world



*Day Light Songs (biting the air)*, Helen Marten

# Round and round and...

 In The Tower, Level 2

Draw a  next to how you feel after going down the slides. Ask the people with you how they felt too.

- “My head is spinning.”
- “My tummy feels weird.”
- “I feel in a better mood.”
- “I had a lot of fun.”
- “I was a little scared.”
- “I feel brave.”
- “I won't do it again anytime soon!”

**Now I'm  
seeing double!**

# Are you hungry?

 In The Tower, Level 2

Find an artwork you would like to eat.  
Imagine it melting on your tongue.

What does it taste like?



.....

.....

.....

.....



**An astonishing material frames the elevators on every level of The Tower. Can you guess what these tiles are made of?**

.....

.....

.....

# Off to art we go

---

If you take a stroll towards the Café du Parc, you can walk on an artwork! This mosaic by Kerstin Brätsch was designed as “a painting that looks at the sky.”

Lumio is stuck inside the mosaic, but they want to get back to the lawn. Fly away and help them find their way back to the \* \* \* \* !



## At the Café du Parc



As you walk around, you may see small wooden houses hanging from the trees. These are nesting boxes to help birds and bats settle in. Each one is home to a specific species.

*MEMORY*, Kerstin Brätsch



# Funny sculpture



In the landscaped park

---

You can walk around the giant sculpture designed by artist Franz West to see it in its entirety.

**The mistral – a very strong wind – was so powerful it blew the artwork over! Pick your favorite viewpoint and try to put it back together.**



*Krauses Gekröse, Franz West*

# Become a plant detective

---

All around you, you can see species typical of the Alpilles: stone pines, arbutus, holm oaks, euphorbias, rockroses... and even rosemary. Now climb to the top of the large lawn at the back of the park, where you will have a splendid view of the entire Parc des Ateliers.

Can you find the two plants you won't see in the park?



*palm tree*



*weeping willow*



*cactus*



*stone pine*



*rosemary*



*water lilies*

# What do you see walking by?

---



Draw animals that could live in the park  
or on The Tower.



# Vice Vers' Art

---

Name an artwork you saw at LUMA Arles that you could associate with each emotion:



**Joy**

---

---

**Sadness**

---

---

**Anger**

---

---

**Fear**

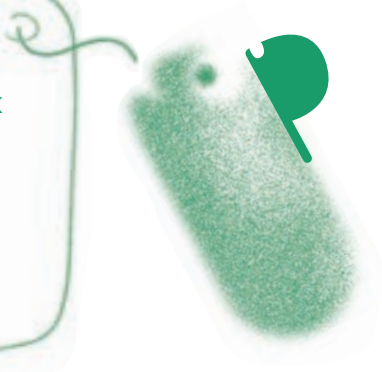
---

---

**Surprise**

**Your very own museum!**

Look closely at an artwork that intrigues you, from every possible angle, near and far. Close your eyes and picture it. It is now part of the little museum in your head.



# Waffles in the sky

---

You are now in the Cour des Forges, which lost its roof in a fire. Today, it is covered by a colorful canopy that provides shade.

Since Lumio is suffering from the sun, you can put them in the shade by completing the canopy.



# I am a(n) \_\_\_\_\_ artist!

Complete the title and choose your defining feature.

Let Lumio help you with a few examples.

*Avant-garde, Surrealist, Realist, Poetic, Romantic...*

---

If you had to create or invent an artwork,  
what would it look like?

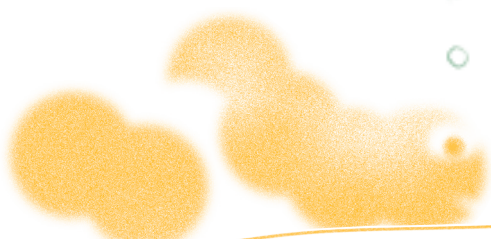
hairy light scary serious  
shiny soft colorful  
moving dark funny

Title \_\_\_\_\_

Materials \_\_\_\_\_

As big as:

- An apple
- A tree
- A leaf
- A bee



**What is a label?**

**A label is a small rectangle stuck to the wall near an artwork, on which are written its title, the artist's name, the date it was created, the materials used to make it, and so on and so forth.**

# Art for Children

---

## Exhibition tickets Children & Co.

Designed especially for families, this ticket allows you to discover all the exhibitions at a reduced rate for one or two adults accompanying up to five children.

It is the perfect opportunity to share precious moments while sparking the curiosity of the younger ones.

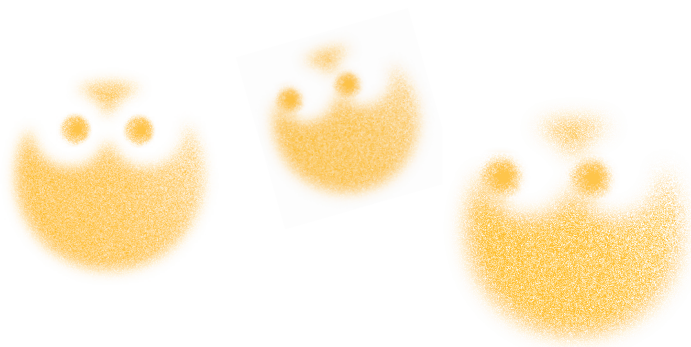
<b>Under 26:</b>	Free
<b>High season:</b>	€12 per adult
<b>Low season:</b>	€7 per adult

## Visits & workshops



Throughout the year, LUMA Arles offers tours and workshops tailored to younger visitors. Inspired by the venue and current exhibitions, these activities offer children the opportunity to learn while having fun.

For more information, visit the ticket office or scan the QR code.



Imagined by the Cultural Mediation Team of  
the Public Services Department - LUMA Arles

**Illustrations:**  
Alexis Jamet & Manon Cezaro

**Graphic Design:**  
Christine Denamur, Maria-Luisa Rojano, Laurianne de Lépine



**What did you think  
of your exploration  
of LUMA Arles?  
Now you can make  
Lumio talk or draw them!**

